

Scenic Ruby & Pearl

Refurbished 2019 | Built 2009/2011 | Length 135 metres | Passengers 159 | Cabins 80 | Crew 59 | Gross tonnage 2,721



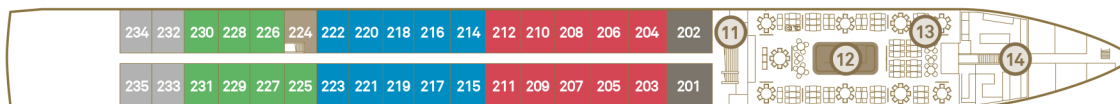
Sun Deck



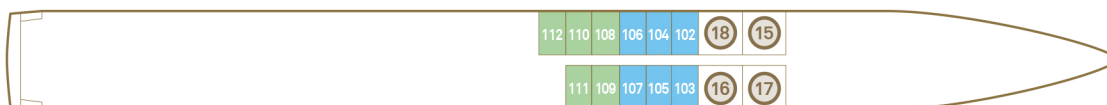
Diamond Deck



Sapphire Deck



Jewel Deck

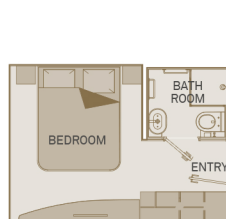


Deck Plan

- ① Riverview Terrace
- ② Wheelhouse
- ③ Sun Deck
- ④ Walking Track
- ⑤ Panorama Deck
- ⑥ Portobellos Restaurant
- ⑦ River Café
- ⑧ Panorama Lounge & Bar
- ⑨ Gift Shop
- ⑩ Reception
- ⑪ Elevator
- ⑫ Crystal Dining
- ⑬ Table La Rive
- ⑭ Galley
- ⑮ Wellness Area
- ⑯ Salt Therapy Lounge
- ⑰ Hairdresser
- ⑱ Fitness Centre

Suite Categories

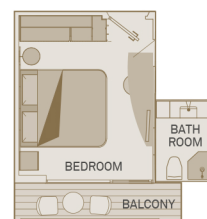
Diamond Deck		Sapphire Deck		Jewel Deck	
RS	Royal Panorama Suite	C	Balcony Suite	E	Standard Suite
A	Balcony Suite	BA	Balcony Suite	D	Standard Suite
PA	Balcony Suite	BS	Single Balcony Suite		
PP	Balcony Suite	BB	Balcony Suite		
RA	Royal Balcony Suite	B	Balcony Suite		
R	Royal Balcony Suite	BJ	Junior Balcony Suite		
RO	Royal Owner's Suite				
P	Balcony Suite				
RJ	Junior Balcony Suite				



Standard Suite

15m²/160ft²

E D

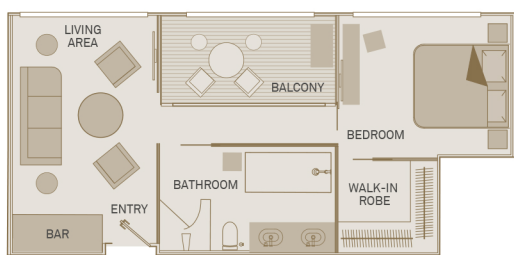


Private Balcony Suite

19m²/205ft²

Including Scenic Sun Lounge

A PA PP P C BA BB B

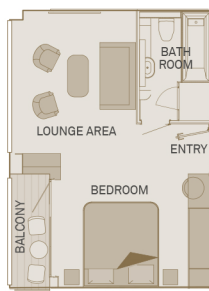


Royal Owner's Suite

48m²/520ft²

One bedroom suite including Scenic Sun Lounge

RO

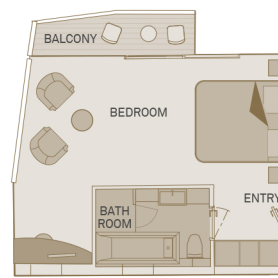


Royal Balcony Suite

29m²/315ft²

Including Scenic Sun Lounge

R RA

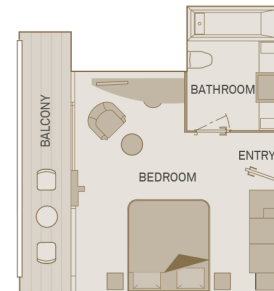


Royal Panorama Suite

30m²/325ft²

Including Scenic Sun Lounge

RS



Junior Balcony Suite

23m²/250ft²

Including Scenic Sun Lounge

RJ BJ

The deck plan and cabin layout images are an indication only and may vary. Please refer to scenic.co.uk for further information. # Suites 301 and 302 have an obstructed view from the balcony due to ship design. Scenic Pearl Balcony Suites 303 and 304 are RJ Balcony Suites. Suite 302 has a modified wardrobe and bathroom with no bath and features personal assistance fittings.