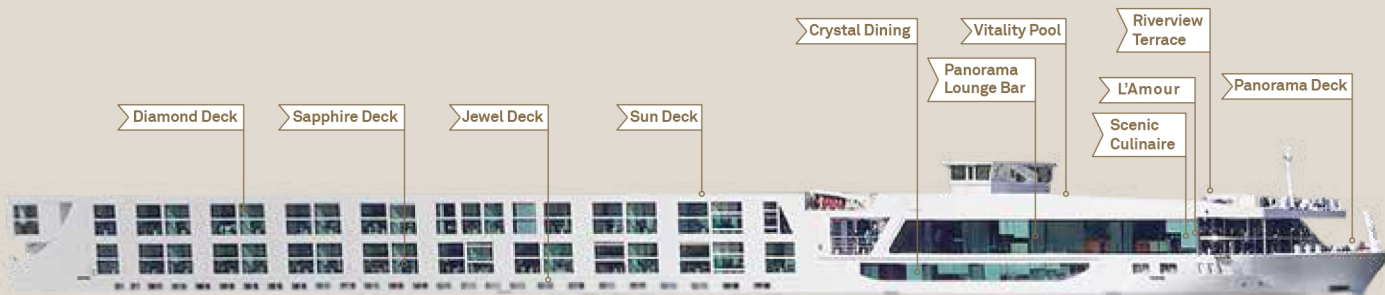


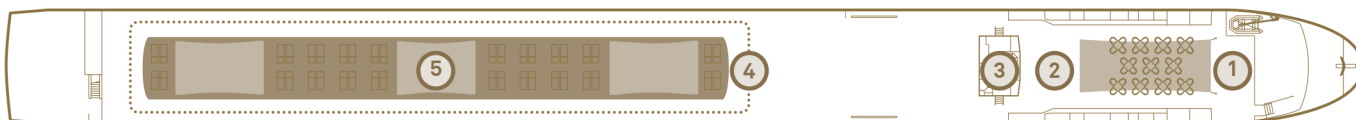
Scenic Sapphire & Diamond

Take a 360° Tour @ scenic.co.uk/360

Refurbished 2017 | Built 2008/2009 | Length 135 metres | Passengers 149 | Cabins 75 | Crew 57 | Gross tonnage 2,721



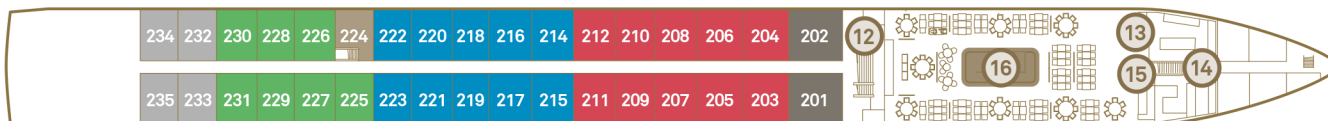
Sun Deck



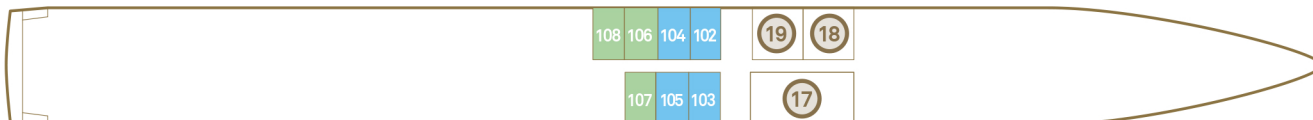
Diamond Deck



Sapphire Deck



Jewel Deck

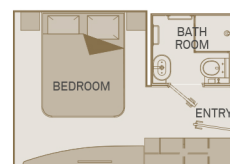


Deck Plan

- ① Riverview Terrace
- ② Vitality Pool
- ③ Wheelhouse
- ④ Walking Track
- ⑤ Sun Deck
- ⑥ Panorama Deck
- ⑦ L'Amour Restaurant
- ⑧ River Café
- ⑨ Panorama Lounge & Bar
- ⑩ Gift Shop
- ⑪ Reception
- ⑫ Elevator
- ⑬ Table La Rive
- ⑭ Galley
- ⑮ Scenic Culinaire
- ⑯ Crystal Dining
- ⑰ Fitness Centre
- ⑱ Salt Therapy Lounge
- ⑲ Wellness Area

Suite Categories

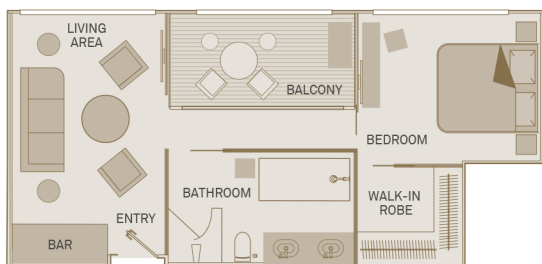
Diamond Deck		Sapphire Deck		Jewel Deck	
RS	Royal Panorama Suite	C	Balcony Suite	E	Standard Suite
A	Balcony Suite	BA	Balcony Suite	D	Standard Suite
PA	Balcony Suite	BS	Single Balcony Suite		
PP	Balcony Suite	BB	Balcony Suite		
RA	Royal Balcony Suite	B	Balcony Suite		
RO	Royal Owner's Suite	BJ	Junior Balcony Suite		
P	Balcony Suite				
RJ	Junior Balcony Suite				



Standard Suite

15m²/160ft²

E D

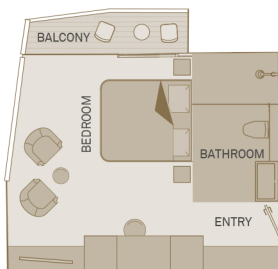


Royal Owner's Suite

47m²/510ft²

One-bedroom suite including Scenic Sun Lounge

RO

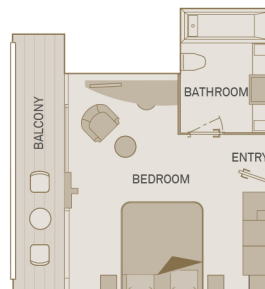


Royal Panorama Suite

25m²/269ft²

Including Scenic Sun Lounge

RS

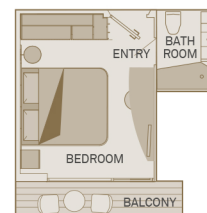


Junior Balcony Suite

23m²/250ft²

Including Scenic Sun Lounge

RJ BJ



Private Balcony Suite

19m²/205ft²

Including Scenic Sun Lounge

A PA PP P C BA BB B

The deck plan and cabin layout images are an indication only and may vary. # Suites 301 and 302 have an obstructed view from the balcony due to ship design. Suite 302 has a modified wardrobe and bathroom with no bath and features personal assistance fittings.