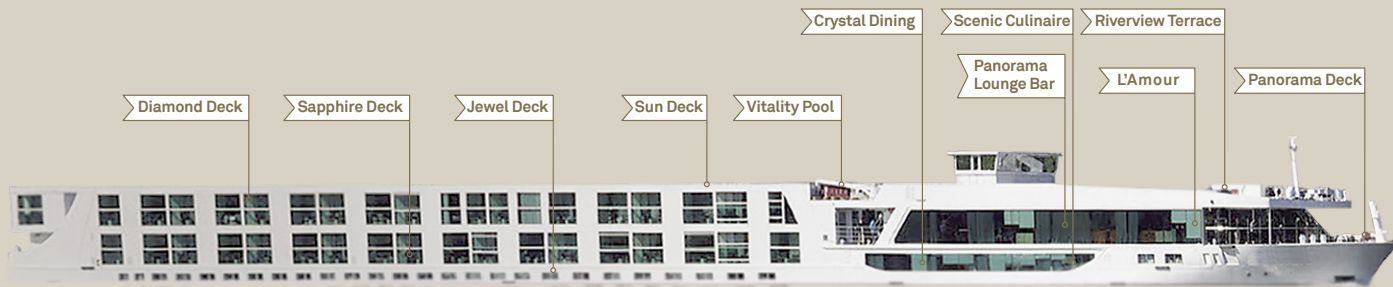
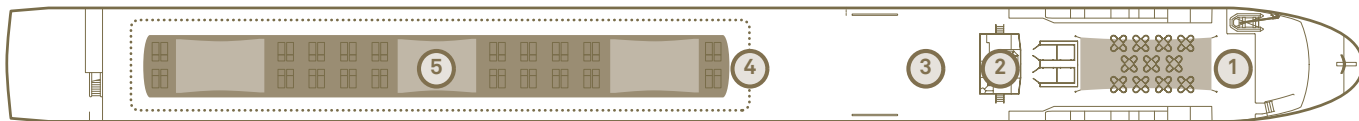


Scenic Sapphire & Diamond

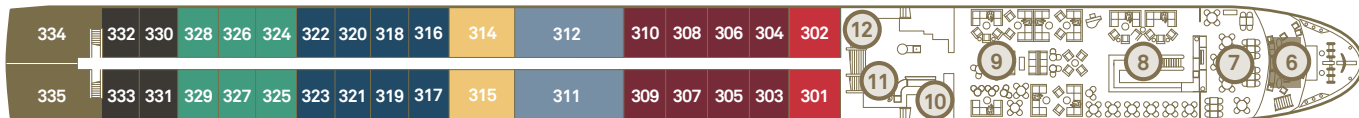
Rebuilt 2017 | Built 2008/2009 | Length 135 metres | Passengers 155 | Cabins 78 | Crew 53 | Gross tonnage 2,721



Sun Deck



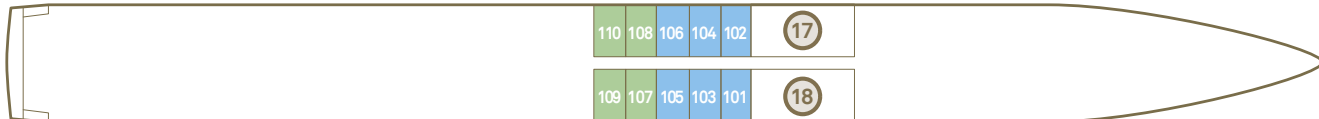
Diamond Deck



Sapphire Deck



Jewel Deck

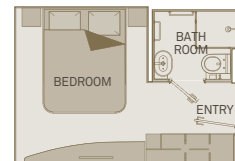


Deck Plan

- 1 Riverview Terrace
- 2 Wheelhouse
- 3 Vitality Pool
- 4 Walking Track
- 5 Sun Deck
- 6 Panorama Deck
- 7 L'Amour Restaurant
- 8 River Café
- 9 Panorama Lounge & Bar
- 10 Gift Shop
- 11 Reception
- 12 Elevator
- 13 Table La Rive
- 14 Galley
- 15 Scenic Culinaire
- 16 Crystal Dining
- 17 Fitness Centre
- 18 Wellness Area

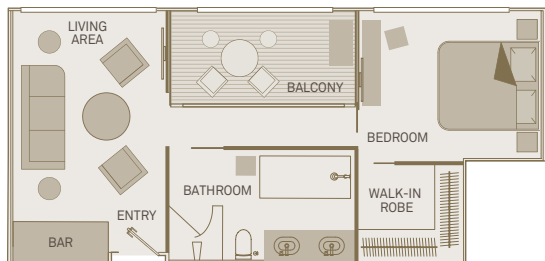
Suite Categories

Diamond Deck		Sapphire Deck		Jewel Deck	
RS	Royal Panorama Suite	C	Balcony Suite	E	Standard Suite
A	Balcony Suite	BA	Balcony Suite	D	Standard Suite
PA	Balcony Suite	BS	Single Balcony Suite		
PP	Balcony Suite	BB	Balcony Suite		
RA	Royal Balcony Suite	B	Balcony Suite		
RO	Royal Owner's Suite	BJ	Junior Balcony Suite		
P	Balcony Suite				
RJ	Junior Balcony Suite				



Standard Suite

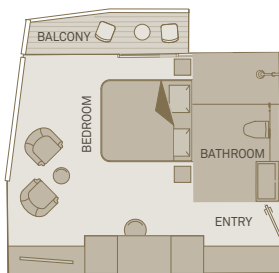
15m²/160ft²



Royal Owner's Suite

47m²/510ft²

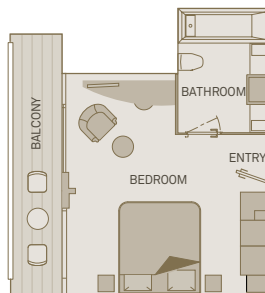
One bedroom suite including Scenic Sun Lounge



Royal Panorama Suite

30m²/325ft²

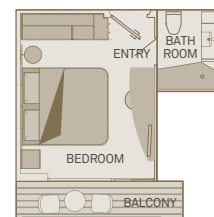
Including Scenic Sun Lounge



Junior Balcony Suite

23m²/250ft²

Including Scenic Sun Lounge



Private Balcony Suite

19m²/205ft²

Including Scenic Sun Lounge



The deckplan and cabin layout images are an indication only and may vary. Please refer to scenic.com.au for further information.